



JOURNAL OF FORESTRY SCIENCE AND TECHNOLOGY

ISSN 1859-3828



No. 2
2018

VIET NAM NATIONAL UNIVERSITY OF FORESTRY

**JOURNAL OF FORESTRY
SCIENCE AND TECHNOLOGY**

ISSN: 1859 - 3828

**THE SEVENTH YEAR
NO. 2 - 2018**

Editor-in-Chief:

Pham Van Chuong
Tel: 02433.725.779

Deputy Editor-in-Chief:

Bui The Doi
Nguyen Van Hung

Head – office

Library -

Vietnam National University of Forestry

Chuong My – Ha Noi – Viet Nam

Tel: 02485.883.318

Email: Tapchikhenlamnghiep@gmail.com

License number:

1948/GP - BTTTT

Ministry of Information and
Communications issued
on 23 October 2012

Printed in
Multicolour Printing Company
Limited

CONTENTS

Page

- **Ha Van Huan, Luu Thi Thao Nguyen, Nguyen Minh Quang.** To create DNA barcode data of *Magnolia chevalieri* (Dandy) V.S. Kumar for identification species and researching genetic diversity **3-9**
- **Nguyen Thi Thu Hang, Nguyen Van Thanh, Nguyen Thi Hong Nhung.** Determination of some kinds of important ingredients of components and biological activity of *Garcinia cowa* fruit **10-14**
- **Ha Quang Anh.** Carbon stock in forest plantations - a case study in Luot mountain **15-22**
- **Phan Quoc Dung, Nguyen Hong Hai.** Biodiversity, spatial and association patterns of natural tree species in tropical broadleaved forest in Northern Vietnam **23-32**
- **Cao Thi Thu Hien, Luong Thi Phuong.** Modelling diameter increment of natural forest state III in four provinces in the central region, Vietnam **33-43**
- **Bui Manh Hung.** Structure of tropical forest ecosystem history and development - a review **44-54**
- **Myo Min Thant, Bui Manh Hung.** Relationships and spatial distribution of species in North Zamari Reserve Forest, Thayarwaddy, Myanmar **55-64**
- **Nguyen Minh Thanh, Nguyen Thi Bich Phuong, Bui Nhat Hung.** Efficiency assessment of agricultural land use in Con Cuong district, Nghe An province **65-74**
- **Tran Quang Bao, Pham Quang Duong.** Use of high resolution Google Earth images for land use/land cover mapping in Thuy Trieu commune, Thuy Nguyen district, Hai Phong city **75-84**
- **Tran Minh Canh, Le Thai Son, Le Xuan Thang.** Characteristics of fuels and fire risk among the main forest types in Hoang Lien National Park **85-95**
- **Dong Thanh Hai, Thao A Tung.** Status and social organization of Hatinh Langur (*Trachypithecus hatinhensis*, Dao 1970) in Dong Hoa and Thach Hoa communes forest, Quang Binh province **96-103**
- **Dang Thi Thuy Hat, Tran Thi Thanh Thuy, Dang The Anh, Do Quang Trung.** Investigation of the adsorption of phosphate in groundwater on modified laterite ore by cerium **104-111**
- **Nguyen Hai Hoa, Bui Ngoc Tu Uyen, Diana Gabriela Flores Montenegro, Nguyen Thi Thu Hien, Dang Hoang Vuong, Nguyen Thi Bich Hao.** Mapping coastal vulnerability using ICVI (Integrated coastal vulnerability index) in Nam Dinh coast, Vietnam **112-121**
- **Lo Hong Son, Nguyen Hai Hoa, Diana Gabriela Flores Montenegro, Nguyen Thi Thu Hien, Dang Hoang Vuong, Nguyen Thi Bich Hao.** Using multi-temporal remote sensing data to quantify forest cover change in Dien Bien Dong district, Dien Bien province during 1991 - 2017 **122-130**
- **Vu Tien Thinh, Tran Van Dung, Luu Quang Vinh, Ta Tuyet Nga.** Using maxent to assess the impact of climate change on the distribution of Southern yellow-hecked crested gibbon (*Nomascus gabriellae*) **131-140**
- **Nguyen Thi Thu, Pham Thanh Trang, Phung Thi Tuyen, Tran Thi Tu Duoc, Hoang Thanh Luong.** The status of coniferous plants of Nam Nung Nature Reserve in Dak Nong province **141-146**
- **Pham Thanh Trang, Nguyen Thi Thu, Phung Thi Tuyen, Do Van Truong, Ly Ta Chun, Hoang Manh Quyen.** Diversity and distribution of Ericaceae species in Muong La Nature Reserve, Son La province **147-156**
- **Nguyen Thanh Tung, Nguyen Huy Quang, Luu Quang Vinh.** New record of bent-toed Gecko (*Cyrtodactylus bobrovi* Nguyen, Le, Pham, Ngo, Hoang, Pham & Ziegler, 2015) from Cuc Phuong National Park **157-161**
- **Trinh Hien Mai.** Influence of curing parameters on chemical fixation and water resistance of modified Beech veneers **162-171**
- **Le Dinh Hai, Pham Thanh Huong.** Key factors influencing tree planting decisions of households: a case study in Hoa Binh province **172-180**

Tạp chí:

KHOA HỌC & CÔNG NGHỆ

LÂM NGHIỆP

ISSN: 1859 - 3828

NĂM THỨ BẢY

SỐ 2 NĂM 2018

TỔNG BIÊN TẬP

PHẠM VĂN CHUÔNG

PHÓ TỔNG BIÊN TẬP

BÙI THẾ ĐOÀI

NGUYỄN VĂN HÙNG

TÒA SOẠN

Thư viện – Đại học Lâm nghiệp
Xuân Mai – Chương Mỹ – Hà Nội
ĐT: 02485.883.318
Email: Tapchikhenlamnghiep@gmail.com

Giấy phép số:

1948/GP – BTTTT
Bộ Thông tin – Truyền thông
cấp ngày 23 tháng 10
năm 2012

In tại Công ty TNHH in ấn Đa Sắc
Tổ dân phố số 7, phường Xuân Phương,
quận Nam Từ Liêm,
thành phố Hà Nội

MỤC LỤC

Trang

- **Hà Văn Huân, Lưu Thị Thảo Nguyên, Nguyễn Minh Quang.** Xây dựng dữ liệu DNA barcode cho loài Mỡ phủ thọ (*Magnolia chevalieri* (Dandy) V.S. Kumar) phục vụ giám định và nghiên cứu đa dạng di truyền **3-9**
- **Nguyễn Thị Thu Hằng, Nguyễn Văn Thanh, Nguyễn Thị Hồng Nhung.** Xác định thành phần và hoạt tính sinh học của một số nhóm hợp chất chính trong quả Tai chua **10-14**
- **Hà Quang Anh.** Ước tính lượng các bon trong rừng trồng - nghiên cứu điểm tại núi Luót **15-22**
- **Phan Quốc Dũng, Nguyễn Hồng Hải.** Phân tích mô hình phân bố và quan hệ không gian của một số các loài cây rừng lá rộng thường xanh ở miền Bắc Việt Nam **23-32**
- **Cao Thị Thu Hiền, Lương Thị Phương.** Xây dựng mô hình tăng trưởng đường kính rừng tự nhiên trạng thái III ở 4 tỉnh miền Trung Việt Nam **33-43**
- **Bùi Mạnh Hưng.** Phân tích cấu trúc hệ sinh thái rừng nhiệt đới - lịch sử và phát triển **44-54**
- **Myo Min Thant, Bùi Mạnh Hưng.** Quan hệ loài và phân bố không gian cây rừng tự nhiên tại Khu Bảo tồn Zamari, Thayarwaddy, Myanmar **55-64**
- **Nguyễn Minh Thanh, Nguyễn Thị Bích Phượng, Bùi Nhật Hùng.** Đánh giá hiệu quả sử dụng đất nông nghiệp trên địa bàn huyện Con Cuông, tỉnh Nghệ An **65-74**
- **Trần Quang Bảo, Phạm Quang Dương.** Sử dụng ảnh vệ tinh có độ phân giải cao Google Earth để thành lập bản đồ sử dụng đất và đánh giá biến động lớp phủ ở xã Thủy Triều, huyện Thủy Nguyên, thành phố Hải Phòng **75-84**
- **Trần Minh Cảnh, Lê Thái Sơn, Lê Xuân Thắng.** Đặc điểm vật liệu và nguy cơ cháy ở các trạng thái rừng chủ yếu tại Vườn Quốc gia Hoàng Liên **85-95**
- **Đồng Thanh Hải, Thảo A Tung.** Tình trạng và tổ chức xã hội quần thể Voọc Hà Tĩnh (*Trachypithecus hatinhensis*, Dao 1970) tại khu rừng xã Đồng Hóa và Thạch Hóa, huyện Tuyên Hóa, tỉnh Quảng Bình **96-103**
- **Đặng Thị Thúy Hát, Trần Thị Thanh Thủy, Đặng Thế Anh, Đỗ Quang Trung.** Khảo sát khả năng hấp phụ ion photphat trong nước ngầm trên laterit biến tính bằng xeri **104-111**
- **Nguyễn Hải Hòa, Bùi Ngọc Tú Uyên, Diana Gabriela Flores Montenegro, Nguyễn Thị Thu Hiền, Đặng Hoàng Vương, Nguyễn Thị Bích Hảo.** Sử dụng chỉ số tổn thương (ICVI - Integrated coastal vulnerability index) xây dựng bản đồ nguy cơ tổn thương khu vực bờ biển tỉnh Nam Định **112-121**
- **Lò Hồng Sơn, Nguyễn Hải Hòa, Diana Gabriela Flores Montenegro, Nguyễn Thị Thu Hiền, Đặng Hoàng Vương, Nguyễn Thị Bích Hảo.** Sử dụng dữ liệu viễn thám đa thời gian định lượng thay đổi độ che phủ rừng tại huyện Điện Biên Đông, tỉnh Điện Biên giai đoạn 1991 - 2017 **122-130**
- **Vũ Tiến Thịnh, Trần Văn Dũng, Lưu Quang Vinh, Tạ Tuyết Nga.** Ứng dụng mô hình maxent để đánh giá ảnh hưởng của biến đổi khí hậu đến vùng phân bố của loài Vượn má vàng phía Nam (*Nomascus gabriellae*) **131-140**
- **Nguyễn Thị Thu, Phạm Thành Trang, Phùng Thị Tuyền, Trần Thị Tú Dược, Hoàng Thanh Lương.** Nghiên cứu thành phần và phân bố của các loài lá kim tại Khu Bảo tồn Thiên nhiên Nam Nung - Đắc Nông **141-146**
- **Phạm Thành Trang, Nguyễn Thị Thu, Phùng Thị Tuyền, Đỗ Văn Trường, Lý Tà Chun, Hoàng Mạnh Quyền.** Nghiên cứu thành phần và phân bố các loài trong họ Đỗ quyên (Ericaceae) tại Khu Bảo tồn thiên nhiên Mường La - Sơn La **147-156**
- **Nguyễn Thanh Tùng, Nguyễn Huy Quang, Lưu Quang Vinh.** Ghi nhận mới của loài Thằn lằn chân ngón bò-b-rộp (*Cyrtodactylus bobrovi* Nguyen, Le, Pham, Ngo, Hoang, Pham & Ziegler, 2015) tại Vườn Quốc gia Cúc Phương **157-161**
- **Trịnh Hiền Mai.** Ảnh hưởng của thông số chế độ xử lý nhiệt đến sự cố định lại của hóa chất và khả năng chống hút nước của ván mỏng gỗ Beech biến tính **162-171**
- **Lê Đình Hải, Phạm Thanh Hương.** Các nhân tố ảnh hưởng đáng kể đến quyết định trồng rừng của các hộ gia đình: nghiên cứu điểm tại tỉnh Hòa Bình **172-180**

USE OF HIGH RESOLUTION GOOGLE EARTH IMAGES FOR LAND USE/LAND COVER MAPPING IN THUY TRIEU COMMUNE, THUY NGUYEN DISTRICT, HAI PHONG CITY

Tran Quang Bao¹, Pham Quang Duong²

^{1,2}*Vietnam National University of Forestry*

SUMMARY

The aim of this study was to establish land use map in 2016 using object-based classification technique in Google Earth image and analyze land use/land cover changes in the landscape of Thuy Trieu commune, Thuy Nguyen district, Hai Phong province in Vietnam over a period of 3 years (2013 - 2016). This paper introduced an object-based method to Google Earth image to map the land cover in Thuy Trieu commune in 2016, which approach applied multi-resolution segmentation algorithm of eCognition Developer and an object-based classification framework. In addition, landuse maps from 2013 created by Landsat 8 image were used to analyze the change in landuse types in 3 years period. The object-based method clearly discriminated the different land cover classes in Thuy Trieu in eight mainland use types with overall kappa value was 0.88. After overlaying landuse map of 2013 created by Landsat 8 image with the landuse map of 2016, all land cover changed during 2013 - 2016 were received. The results of this study will partly contribute to the development of tools in land management, which will save time, money and improve the accuracy of map data updates.

Keywords: eCognition, Google Earth satellite images, land cover change, land use.

I. INTRODUCTION

Land use is the human use of territory for economic, residential, recreational, conservational, and governmental purposes (Bureau of Land Management, U.S. Department of the Interior, 2005). The role of land use management is very important, because land resources are limited and finite with about 148,300,000 square km (Coble et al., 1987) and the global human population which expected to keep growing, and estimates have put the total population at 8.4 billion by mid-2030, and 9.6 billion by mid-2050 (Population Reference Bureau, 2014), is still increasing very fast. Land use detection and change analysis essential for better understanding of interactions and relationships between human activities and natural phenomena. This understanding is necessary for improved resource management and improved decision making (Lu et al., 2004).

GIS and remote sensing have the potential to support such models, by providing data and analytical tools for the study of urban environments. Urban land cover types and their areal distributions are fundamental data required for a wide range of studies in the

physical and social science, as well as by municipalities for land planning purposes (Stefanov, W.L. and M.T. Applegarth, 2001). The advancement in science and technology, the use of satellite images combined with information technology especially Remote Sensing and GIS technology in the mapping work has reduced many difficulties in funding as well as the time of mapping (Ingvar Lindgren and Debashis Mukherjee, 1987).

Satellite images used in map creation usually have some drawbacks. The images are having only lower and medium spatial resolution (size of each pixel on the ground) in the range of 30 m to 80 m collected from sensors such as MSS, TM, ETM+, etc. Another limitation is that it may not be possible to obtain the latest satellite data or the image for the current year (K. Malarvizhia, S. Vasantha Kumarb, P. Porchelvan, 2016). Some other type that has high resolution often very costly and hard to apply large scale. The Google Earth tool has developed quickly and has been widely used in many sectors. The high spatial resolution images released from Google Earth, as a free and open data source, have provided great support for the traditional land use/cover

mapping (Clark et al, 2010; Mering et al., 2010). They have been either treated as ancillary data to collect the training or testing samples for land use/cover classification and validation or used as a visualization tool for land use/cover maps (Kumariset al., 2011; Yu, L., Gong, P., 2011). However, very few studies have been undertaken to use Google Earth images as the direct data source for land use/cover mapping. If Google Earth images can achieve relatively satisfactory classification, it may provide some opportunities for detailed land use/cover mapping by costing little (Guo et al., 2010; Potere, 2008).

The aims of this study are to produce a land use/land cover map for Thuy Trieu, Thuy Nguyen, Hai Phong and compare with the land use map in the past in order to detect changes in land cover from (2013 - 2016).

II. RESEARCH METHODOLOGY

2.1. Study area

Thuy Trieu commune, Thuy Nguyen district is a coastal plain commune, located in the South East of the Red River Delta, 10 km North of the center of Hai Phong. Thuy Trieu commune has coordinates: 20.994164°N, 106.926845°E. With area is 1108 ha and terrain in there is unevenly uneven, around the river covering and dividing, salty soils, intermingled with sand dikes are low-lying lands and tidal creeks (system of ponds, dense lagoons) rivers. Thuy Trieu located in the tropical monsoon belt of Asia, the subtropical characteristics of the weather in Northern Vietnam, affected by the monsoon. In the recent year in Thuy Trieu have a lot of projects that make a lot of change in land cover types. That the reason makes Thuy Trieu become the location to conduct this study.

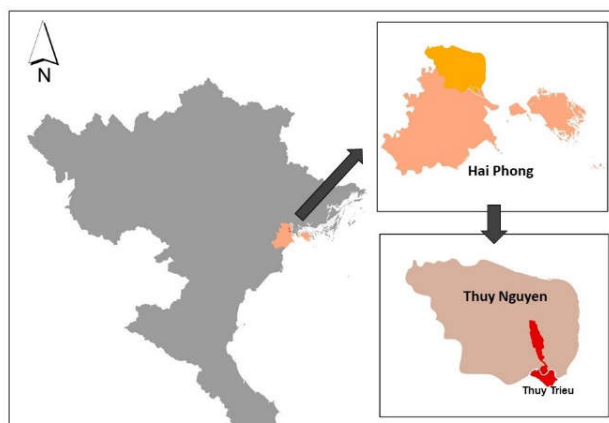


Figure 1. Location of Thuy Trieu, Thuy Nguyen, Hai Phong

2.2. Data Sources

There are two types of satellite images were used in this study: Landsat 8 and Google Earth. The Landsat imagery was downloaded from the USGS Global Visualization Viewer website. Satellite data for the years of 2013 were collected. The image has low cloud cover (< 10%).

Photo Landsat 8:

LC08_L1TP_126046_20131008_20170429_01_T1 taken on 10th August 2013 is the suitable one and had been chosen for classified land-use.

The second type of satellite image is Google Earth collected in 8/26/2016 which has a very high resolution (< 1 m). But this type of image only have four band color: Red (0.625 μm - 0.695 μm), Green (0.530 μm - 0.590 μm), Blue (0.455 μm - 0.525 μm) and alpha.

2.3. Data Processing

Figure 2 is showing the flowchart of data processing that used to conduct this study. Overall this study can divide into 3 main steps. Firstly, download Google Earth images and classifying land use objects. Secondly,

classification all object and check the accuracy of the map. Thirdly, detecting the

change in land use by comparing with the land-use map in 2013.

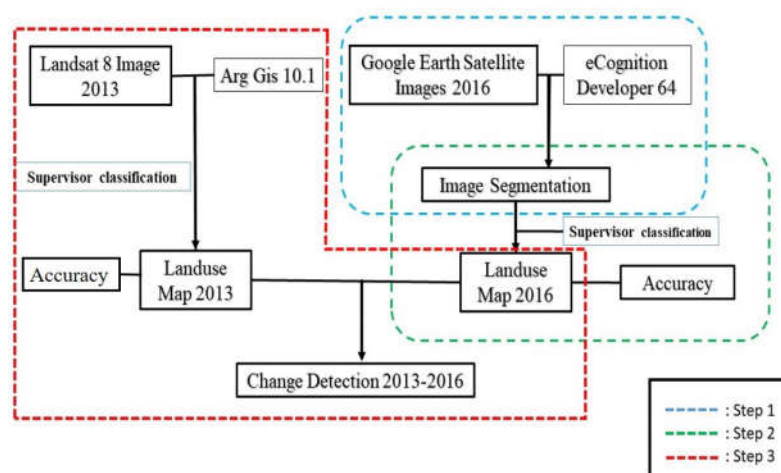


Figure 2. The flowchart of data processing

Step 1: Download Google Earth images and classifying land use objects

Since, Google Earth imagery can only download in regular images (not raster images), software Universal Maps Downloader 9.26 has been used. The coordinate systems of interest area is identified by two points in North-East and South-West. After selecting the desired resolution, the software will automatically download all the piece images in that area. Universal Maps Downloader 9.26 also provides a tool to combine the pieces images into a complete image.

After having satellite images, all object represents in this will be defined. Object-based image analysis requires the creation of objects or separated regions in an image. One established way to do so is image segmentation. The segmentation algorithm applied in this study is the so-called, multi-resolution segmentation, which is available in the eCognition software.

The multi-resolution segmentation algorithm is a bottom-up region merging technique starting with a single image object of one pixel and repeatedly merges them in several loops in pairs to larger units. This algorithm is also an optimization procedure that minimizes the average heterogeneity for a given number of objects and maximizes their homogeneity based on defined parameters. Three key parameters, namely scale, shape, and compactness, need to be set in multi-resolution segmentation. Additionally, different scale parameters, based on visual analysis of segmentation results, were attempted. Once the segmentation process was done, the classification was implemented using a resource-based sample collection and a standard nearest neighbor algorithm. Based on these procedures, land cover maps for the year 2016 were generated.

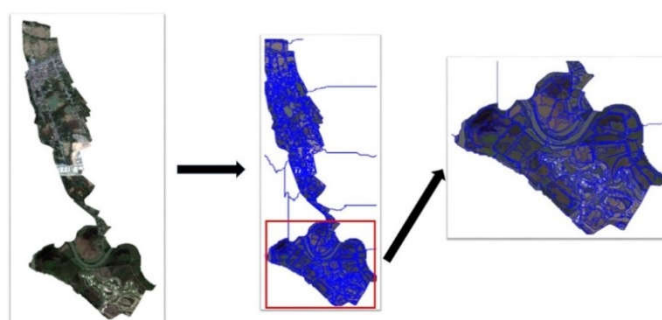


Figure 3. Google Earth image of Thuy Trieu commune and its object based classification

Step 2: Classification and Accuracy

Classification

The Nearest Neighbor classifier in eCognition was used to perform an object-based classification. This classifier uses a defined feature space, e.g., using original bands or customized bands, and a set of samples that represent different classes in order to assign class values to segmented objects.

The procedure consists of teaching the system by giving certain image objects as samples and classifying image objects in the image object domain based on their nearest sample neighbors. Initially, there are eight land cover classes were considered for this purpose including Bare lands, Golfs course, Industrial, Mangrove Forest and Forest, Residential, Rice fields, Water Body, Wetlands - Aquaculture.



Figure 4. Field photo of land use type

Accuracy

An important component of accuracy assessment, Cohen's kappa coefficient is calculated from the error matrix. Kappa tells us how well the classification process performed as compared to just randomly assigning values, i.e. did we do better than random.

In this article, we use ArcGIS to create templates. By using Create random points (in Arc toolbox). 96 random points were created within the boundary of Thuy Trieu commune.

And used Kappa coefficient that was computed using the equation:

$$K = \frac{N \sum_{i=1}^r x_{ii} - \sum_{i=1}^r (x_{i+} \times x_{+i})}{N^2 - \sum_{i=1}^r (x_{i+} \times x_{+i})} \text{ (Congalton, 1991)}$$

Where: N: Total number of sites in the matrix;

r: Number of rows in the matrix;

x_{ij} : Number in row i and column j;

x_{+i} : Total for row i;

x_{i+} : Total for column.

Step 3: Change Detection

Supervised classification categorizes an image's pixels into land cover/vegetation classes based on user-provided training data. These training data identify the vegetation or land cover at known locations in an image

(Priyanka Khandelwal, 2013). It has several advantages over simpler methods like unsupervised classification. First, because the classes are user-defined, they are ensured to conform to the classification hierarchy of the investigation. Second, the use of training data improves the ability to differentiate between classes with similar color profiles. Finally, the method tends to be more reliable and produce more accurate results (Priyanka Khandelwal, 2013). Supervisor classification method on ArcGIS is used to classified landcover in the Landsat 8 image.

Use the same method that we use to define the accuracy of land-use map in 2016. With 42 random points create in ArcGIS, all these points will be compared with the map in 2013 from Google Earth Pro. Apply the Kappa formula to define the accuracy of this map.

Change detection for GIS is a process that measures how the attributes of a particular area have changed between two or more time periods. Change detection often involves comparing aerial photographs or satellite imagery of the area taken at different times (Priyanka Khandelwal, 2013). In this study, the area of each land cover class was calculated

and the forest cover changes were analyzed. Overlaying existed forest map and classified map in 2016 to derive the changes in a period of 3 years (2013 - 2016). In order to see the overall change in the region, studied site was then chosen to characterize the land cover changes in one short-term period (2013 - 2016). Detection of land cover changes was achieved by overlaying (in ArcGIS 10.1) and post-classification comparison of the land cover maps of the different time periods. The changes were accompanied by the respective cross-tabulation matrix showing the change pathways, in order to determine the quantity of the conversions. Change dynamics are presented in maps using a grouping of changes for more clarity in the results.

III. RESULTS AND DISCUSSIONS

3.1. Classification

3.1.1. Land use map in 2016

There are all 8 types of land use that are mentioned in this map: Mangrove and Forest, Residential, Rice Field, Wetlands and Aquaculture, Bare Land, Industrial, Water Body, Golf Course. The area and percentage for each type of land use are represented in the table 1.

Table 1. Land use types of Thuy Trieu in 2016

No.	Type of Land use	Area (ha)	Area (%)
1	Mangrove and Forest	81.4	7.34
2	Residential	144.6	13.05
3	Rice Field	173.8	15.68
4	Wetland and Aquaculture	441.4	39.84
5	Bare Land	41.5	3.74
6	Industrial	36	3.25
7	Water Body	76.9	6.94
8	Golf Course	112.4	10.14
Total		1107.9	100

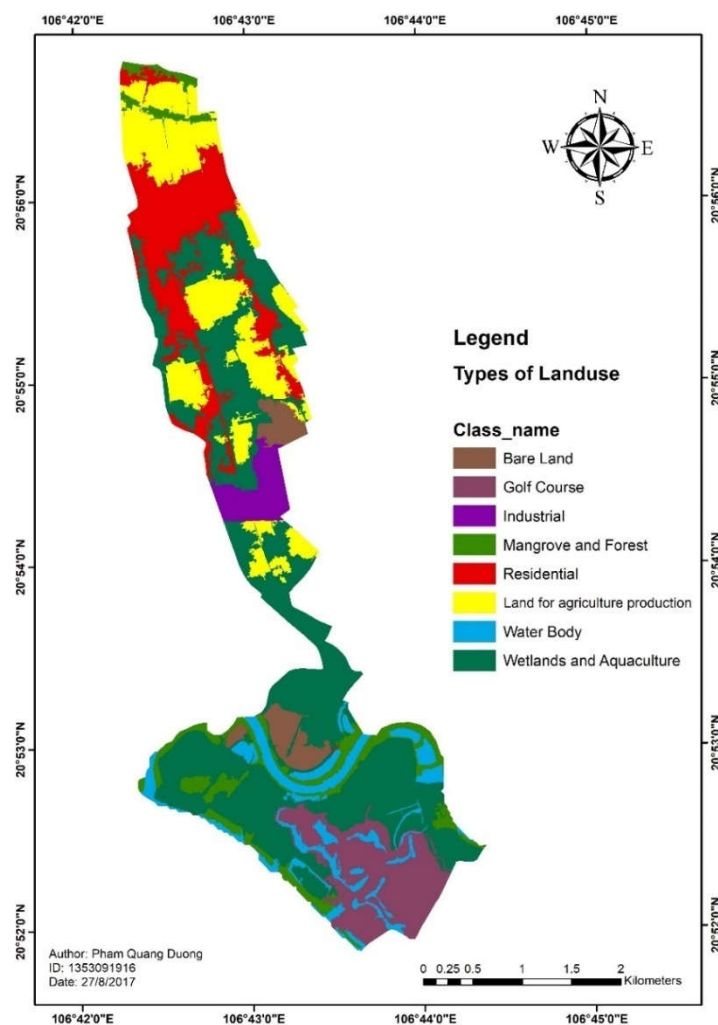


Figure 5. Land use map of Thuy Trieu 2016

There are also other types of land use in Thuy Trieu commune. But because of the small size of the sections, it was merged into some group with the most similar characteristic. Wetlands and Aquaculture area have the largest area of 441.4 ha (39.8% of the total area of the commune). Because Thuy Trieu commune is located near Bach Dang rivers, most of the communes are mudflats, lakes, and lagoons... By the time many people renovated and converted this part into aquaculture. That is also the reason why wetlands and aquaculture were combined in one part. Due to a large amount of silt and fertile soil, the area of rice cultivation also accounts for a large part of the total area of the commune, 173.8 hectares (15.68% of the commune area). Besides the residential area, there is also a

large area with 112 hectares of which is a 36-hole golf course in Vu Yen island. "According to the Ministry of Planning and Investment, the 36-hole golf course planning area on Vu Yen island covers an area of nearly 1.6 million square meters in Dong Hai 1 ward, Hai An district, and Thuy Trieu commune, Thuy Nguyen district. The golf course project is located in the entertainment area, housing and ecological park Vu Yen island of Dinh Vu - Cat Hai Economic Zone, Hai Phong" (Retrieved from Government Portal Socialist Republic of Viet Nam, 2015).

3.1.2. Accuracy

The formula for kappa is:

$$\frac{\text{Observed} - \text{expected}}{1 - \text{Expected}}$$

Observed is overall accuracy, in this case, is 88/96 or 89.6%. Expected is calculated from the rows and column totals.

The product matrix is the sum of the diagonals: 1152.

The Cumulative Sum is: 9216.

We have: $1152/9216 = 12.5\%$.

$$K = \frac{89.6 - 12.5}{1 - 12.5} = 88\%$$

A Kappa coefficient of 0.88 (95% confidence interval from 0.836 to 0.924) was achieved. The strength of agreement is considered to be good. It means that the relationship between map and field situation is very strong.

3.2. Change detection

3.2.1. Land use Map in 2013

Land cover map of Thuy Trieu commune in 2013 by using Landsat 8 satellite images. The accuracy of this map after applying Kappa formula like the step above is 75%. It means that the accuracy of this map is quite good and the relationship between the map and reality really strong.

The spatial distribution of changes over a different time interval. In the three years from 2013 to 2016, the type of land use in Thuy Trieu commune has changed in all areas. But the change is not much excepted in the central and south. These two areas have a great shift in the type of land-use.

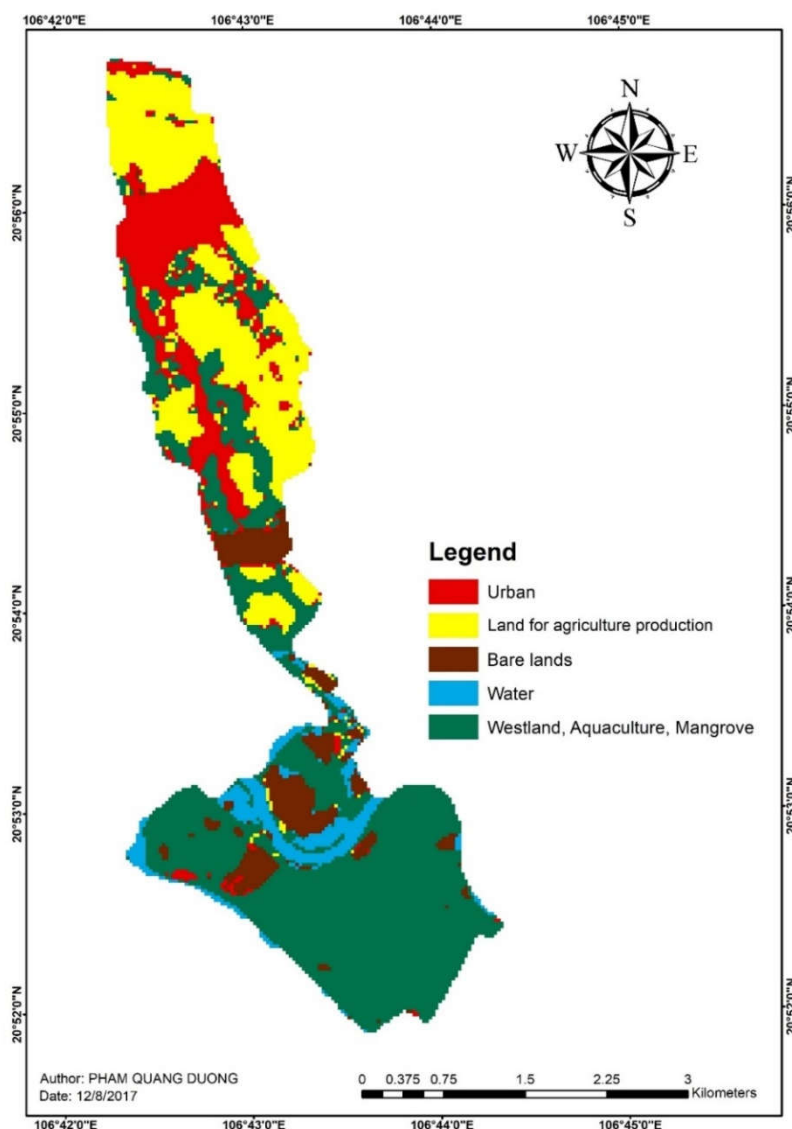


Figure 6. Land use map of Thuy Trieu 2013 and its change in 2013 - 2016

3.2.2. Detail change

Detail changes in the area of each type of land use. In five types of land use, there are two types is increasing, construction area is 176 hectares (an increase of 105% compared to 2013) because of V-Ship Industrial Park and project of Vu Yen golf course establishment. Besides that area of water body has increased

but not significantly with 17 ha (up 28%). The other types of land-use are reduced: wetlands, bare land, rice's field with the area of 60 ha, 46 ha, 87 ha. The area of bare land fell the most with nearly 50% of the area. In the period from 2013 to 2016, a part of the land has been planted upstream. In addition, the same land was converted for other purposes.

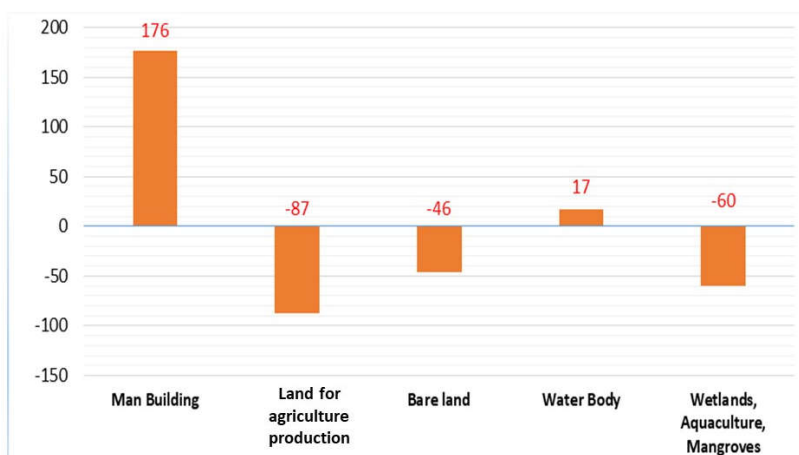


Figure 7. Change for each type of land use in hectare

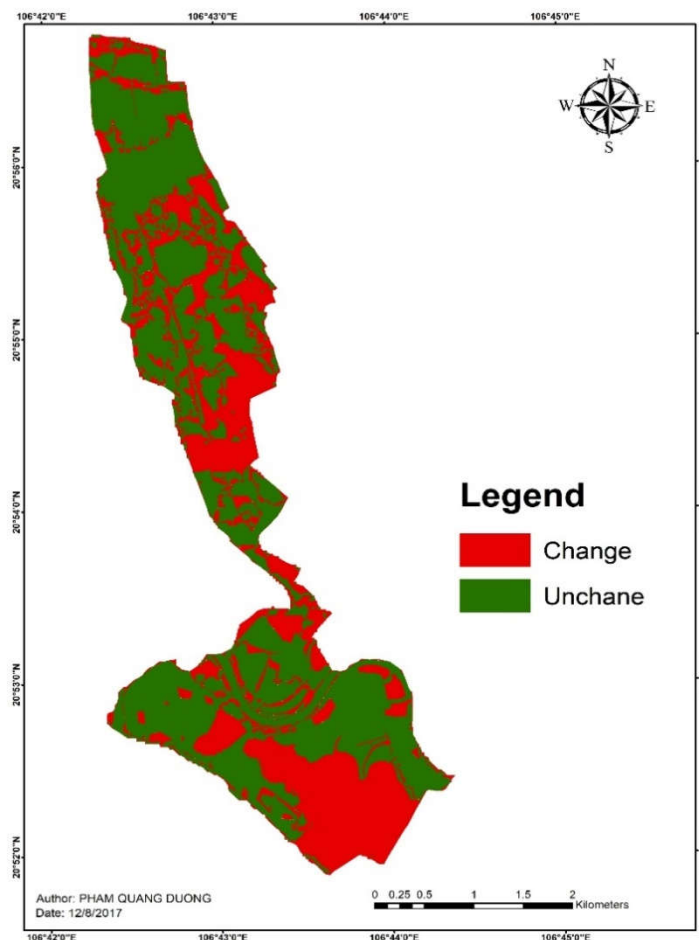


Figure 8. Land use change in period 2013 - 2016

3.3. Limitations of the methodology

First of all, limitations of software used in the study (Google maps downloader) can only download the latest Google Earth images. Therefore, in determining the change of land use, we have to use Landsat 8 images to compare. More over, the limitation of Google earth is that it may not be possible to obtain the original multispectral band data and hence image classification using unsupervised or supervised techniques cannot be carried out.

Secondly, Comparing a very high-resolution image (0.5 m x 0.5 m) to a medium resolution image (30 m x 30 m) will have many shortcomings and difficult to reconcile, and the accuracy of the results will not high. Landsat 8 is medium resolution only with pixel size ranging between 30 m. It may not be possible to visually see the individual buildings, roads, etc. With this spatial resolution, the land use maps can be prepared only through automated image classification methods such as supervised or unsupervised classification techniques, which can not get 100% accurate results.

In the classification process there are two easily confused objects that are water surface that the aquaculture pond. However, the area of the ponds is quite small, so in the classification step by eCognition software, the water surface of the ponds has been grouped together with the surrounding orchard into a separate object. This object can be easily distinguished from the big water surface.

V. CONCLUSION

From the results obtained after studying the land use types and changes in land use change by applying remote sensing technology and GIS in Thuy Trieu commune, Thuy Nguyen district, Hai Phong city in the period of 2013 - 2016, the thesis draws some conclusions: High-resolution Google Earth satellite imagery. Suitable for applying to map setting.

This method is a substitute for traditional methods that take a lot of time and effort. Also using Google Earth imagery is more efficient than using other types of images such as Landsat 7,8, Radar...

In Thuy Trieu commune, 2016, eight common land use types has been classified with high accuracy (88%). The main types of land use are Wetland and Aquaculture with nearly half of commune area. Beside that is an area for industrial and residential. From there, local authorities have the cadastral reference data with the most recent landmark, replacing the maps built many years ago.

In the step of determining the variation in land use type. We have obtained some information. Over the three year period from 2013 to 2016, there have been significant changes in land use patterns. Evidence that the completion of the construction of the V-Ship industrial park, golf course project... changed part of the area (110 ha) of the commune. This is also a good reference for local authorities in land use management.

REFERENCES

1. Bureau of Land Management, U.S. Department of the Interior. *Land Use Planning Handbook*. March 11, 2005.
2. Coble, C. R., Murray, E. G., & Rice, D. R. (1987). *Earth Science*. Englewood Cliffs, NJ: Prentice-Hall.
3. Population Reference Bureau (2014, December 5). Retrieved from 2013 World Population [Factsheet: www.pbr.org](http://www.pbr.org).
4. Lu, D., Mausel, P., Brondizio, E., Moran, E. (2004). *Change detection techniques*. Int. J. Remote Sens.
5. Stefanov, W.L. and M.T. Applegarth (2001). Geomorphic analysis of semiarid landforms using mid-infrared spectroscopy and remote sensing. *American Geophysical Union Eos Transactions* 82, Abstract H42D - 0393.
6. Ingvar Lindgren, Debashis Mukherjee (1987). *Physics Reportson the connectivity criteria in the open-shell coupled-cluster theory for general model spaces*.
7. K. Malarvizhia, S.Vasanth Kumarb,P. Porchelvan (2016). *Use of High-Resolution Google*

Earth Satellite Imagery in Landuse. International Conference on Emerging Trends in Engineering, Science and Technology.

8. Clark, M.L., Aide, T.M., Grau, H.R., Riner, G. (2010). A scalable approach to mapping annual land cover at 250 m using MODIS time series data: A case study in the Dry Chaco Ecoregion of South America. *Remote Sens. Environ*, 114: 2816-2832.

9. Mering, C., Baro, J., Upegui, E. (2010). Retrieving urban areas on Google Earth images: Application to towns of West Africa. *Int. J. Remote Sens*, 31: 5867-5877.

10. Kumaris, D., Georgoula, O., Patias, P., Stylianidis, E. (2011). Comparative analysis of the archaeological content of imagery from Google Earth. *J. Cult. Herit*, 12: 263-269.

11. Yu, L., Gong, P. (2011). Google Earth as a virtual globe tool for Earth science applications at the

global scale: Progress and perspectives. *Int. J. Remote Sens*, 33: 3966-3986.

12. Guo, J., Liang, L., Gong, P. (2010). Removing shadows from Google Earth images. *Int. J. Remote Sens*, 31: 1379-1389.

13. Potere, D. (2008). The horizontal positional accuracy of Google Earth's high-resolution imagery Archive. *Sensors*, 8:7973-7981.

14. Priyanka Khandelwal, K. K. (2013). Unsupervised Change Detection of Multispectral Images using Wavelet Fusion and Kohonen Clustering Network. *International Journal of Engineering and Technology*.

15. Retrieved from Government Portal Socialist Republic of Viet Nam (2015, April 12):<http://Chinhphu.vn>.

SỬ DỤNG ẢNH VỆ TINH CÓ ĐỘ PHÂN GIẢI CAO GOOGLE EARTH ĐỂ THÀNH LẬP BẢN ĐỒ SỬ DỤNG ĐẤT VÀ ĐÁNH GIÁ BIẾN ĐỘNG LỚP PHỦ Ở XÃ THỦY TRIỀU, HUYỆN THỦY NGUYÊN, THÀNH PHỐ HẢI PHÒNG

Trần Quang Bảo¹, Phạm Quang Dương²

^{1,2}*Trường Đại học Lâm nghiệp*

TÓM TẮT

Bài báo trình bày kết quả thành lập bản đồ sử dụng đất năm 2016 từ ảnh vệ tinh Google Earth và phân tích sự thay đổi lớp phủ tại xã Thủy Triều, huyện Thủy Nguyên, Hải Phòng giai đoạn 2013 - 2016. Sử dụng phương pháp phân loại hướng đối tượng trên phần mềm eCognition để phân loại ảnh Google Earth năm 2016 và ảnh Landsat 8 năm 2013, chồng ghép bản đồ hai giai đoạn để phân tích sự thay đổi loại hình sử dụng đất trong 3 năm. Phương pháp phân loại hướng đối tượng đã tách biệt được 8 loại hình sử dụng đất khác nhau ở Thủy Triều, độ chính xác của bản đồ giải đoán có giá trị chỉ số Kappa là 0,88. Tiến hành chồng ghép với bản đồ sử dụng đất năm 2013, bài báo đã phân tích được biến động các loại hình sử dụng đất trong giai đoạn 2013 - 2016. Kết quả của nghiên cứu này sẽ đóng góp một phần vào việc ứng dụng công nghệ GIS và viễn thám trong quản lý đất, giúp tiết kiệm thời gian, tiền bạc và nâng cao độ chính xác của việc cập nhật dữ liệu bản đồ.

Từ khóa: Ảnh vệ tinh Google Earth, biến động lớp phủ, eCognition, sử dụng đất.

Received : 16/01/2018

Revised : 22/3/2018

Accepted : 30/3/2018